

# Meter Connection Products



# EXPERIENCE IS CENTRAL.

Backed by more than 50 years of experience, Georg Fischer Central Plastics is the largest single source supplier for meter connections – including products and technologies that prevent or inhibit various types of corrosion.

Gas | Water & Waste Water |  
Energy | Industrial

## YOUR ONE-STOP SOURCE

Georg Fischer Central Plastics is your one-stop source for pipe joining products, hdpe pipe & end-to-end solutions.

We started in the meter connection business in 1955 with the development of an isolation product for corrosion prevention and have manufactured plastic fittings since the early 1960's. Georg Fischer Central Plastics has grown to be North America's largest supplier of polyethylene piping system connections. We're also specialists in metal fabrication, making us the largest single manufacturer of meter sets and meter connection products in the western hemisphere.

## STATE-OF-THE ART MANUFACTURING

At Georg Fischer Central Plastics, we are dedicated to excellence and innovation. We continually invest in new technologies to ensure our production is second to none. Our operations in Shawnee, Oklahoma span seven acres and house a fully controlled manufacturing facility operating under strict ISO standards. But we go much further to develop high performance, leak-free piping systems.

We work closely with our customers to custom design products for specific applications. With advanced in-house engineering and testing facilities, we develop innovative products and solutions to meet the demands and challenges of today's piping infrastructure.

- Fully controlled production system
- ISO 9001 quality system
- High volume capabilities
- Robotic welding
- Fully automated injection molding
- Tool & die facility
- Advanced powder coating system
- Many proprietary processes



## EXPERTS IN METER CONNECTIONS

- Standard and Insulated Swivels
- Swivel Nuts and Gaskets
- Insulating Unions
- Pre-fabricated Meter Sets
- Loops, Bends and Manifolds

## WE MEET OR *EXCEED* ALL INDUSTRY STANDARDS

- API Pipe
- ANSI B109 Connections
- ANSI B1.20.1 Threads
- NACE Surface Profile
- API 1104 Welding
- ASTM B117 Corrosion Testing
- ANSI B633 Zinc Plating

Our time-proven insulated meter swivels continue to be the most popular way to insulate gas meters worldwide.

## METER SWIVELS

Designed by Georg Fischer Central Plastics, the insulated meter swivel is used in many natural gas service systems throughout North America. The insulation material covers the pilot and flange and externally extends up the body. The insulation is molded in place, which means there are no loose parts. This greatly simplifies assembly and eliminates the possibility of short-circuits caused by moisture. The pigmented insulation is unaffected by ultraviolet rays, has high dielectric strength and is bonded to the metal with a weatherproof adhesive. A metal ring is installed on each swivel, serving as a bearing surface for the nut and preventing damage to the nylon.

## FEATURES

- Manufactured for all types of gas meters
- Interchangeable with standard connections, accepts standard meter nuts
- Available configurations - Straight, Offset, Female, Male and 90°
- Available sizes: 10Lt.-100Lt., 1A-5A, #2-#5
- All meter swivel configurations comply with ASTM A197, ANSI B1.20.1 and ANSI B109.1
- Available in Black Malleable Iron (BMI) and Galvanized Malleable Iron (GMI)
- Nuts
- Gaskets

Call us for availability of other sizes and dimensions. Visit [gfcp.com](http://gfcp.com) to view product details in our catalog.

## SWIVELS



**STRAIGHT INSULATED**



**STRAIGHT NON-INSULATED**



**FEMALE INSULATED**



**NON-INSULATED FEMALE**



**OFFSET INSULATED**



**OFFSET NON-INSULATED**



**INSULATED 90° ELBOWS**



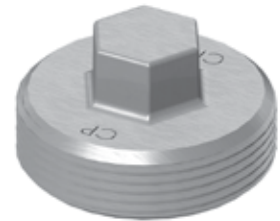
**NON-INSULATED 90° ELBOWS**

## NUTS AND GASKETS



**NUTS**

Complies with ASTM A197, ANSI B1.20.1 and ANSI B109.1



**NUT PLUG**

Complies with ASTM A197, ANSI B1.1 and ANSI B109.1



**CONNECTION BLIND**

Complies with ANSI B109.1

Available in tinned steel

Current sizes available: 10LT, 1A, 20LT, 30LT, 45LT, and 100LT



**GASKETS**

Complies with ASTM D2000

The first of its kind when we developed it over 50 years ago, our insulated union is an industry standard.

Call us for availability of other sizes and dimensions. Visit [gfcp.com](http://gfcp.com) to view product details in our catalog.

## INSULATION UNIONS

The insulated union is a serviceable connection that incorporates a permanently molded and bonded material. This allows the union to act as an interruption point in the metallic or conductive path between a pipeline and its associated plant and /or equipment.

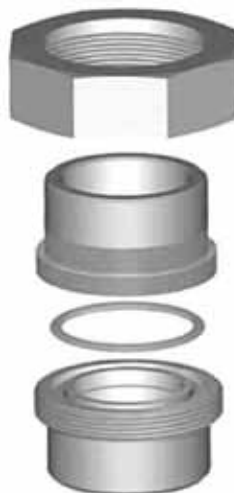
### "O" RING STYLE



#### 150# "O" RING STYLE

Flat faced type, 150 Class 300 CWP working pressure.  
Complies with ASTM A197: ANSI B1.20.1

Stops Galvanic and Electrolytic Corrosion of Mains and Services  
Permanent Economical Protection  
Protects against stray or induced currents 30LT, 45LT



#### 3000# FORGED STEEL "O" RING STYLE

Flat faced type, 3000 lb. working pressure.

Complies with ASTM A105 material specification and ANSI B1.20.1

## GROUND JOINT UNIONS



### 3000# FORGED STEEL GROUND JOINT

3000 lb. working pressure  
Complies with ASTM A105  
and ANSI B1.20.1

## O-RING UNIONS



### 150# GROUND JOINT

150-Class, 300 lb. cold  
working pressure.  
Complies with ASTM A197  
and ANSI B1.20.1



## FEATURES

### O-RING UNIONS 150# & 3000#

- Confined O-ring seal
- Extra heavy shoulder on swivel end
- Integral one-piece construction
- Precision threading

### GROUND JOINT UNIONS 150# & 3000#

- Extra wide seating surface
- Precise mating tapers
- Extra heavy shoulder on swivel end
- Integral one-piece construction
- Precision threading

Any configuration can be produced using our robotic welding system and automated assembly equipment.

Call us for availability of other sizes and dimensions. Visit [gfc.com](http://gfc.com) to view product details in our catalog.

## METER SETS

Georg Fischer Central Plastics produces more than 100 types of meter set assembly configurations for residential and commercial applications. This includes the most popular configurations of fully fabricated meter sets, frames, bends and components. This eliminates most threaded components and the need for numerous separate parts-speeding up the installation process.

## COMMERCIAL SETS



**ROTARY METERS**



## RESIDENTIAL SETS

Residential meter sets are available in many sizes and configurations, Georg Fischer Central Plastics can customize to meet your specifications.



METER SET WITH PRE-BENT LOOPS

METER BARS



METER SET WITH METER BARS

## TESTING AND COMPLIANCE

All Georg Fischer Central Plastics Meter Sets meet or exceed the following applicable standards and are subjected to an extensive testing program to ensure consistent performance in the field that is safe, robust and reliable.

- DOT Code of Federal Regulations Title 49 Part 192
- Steel Gas Carrier - ASTM A53 /API5L
- Protective Coating

All parts are protected with an electrostatically applied fusion-bonded epoxy powder or polyester powder coating specifically designed for the exterior of gas petroleum pipelines.

- 4 milsv Minimum Thickness
- AGA 49 Grey
- Cathodic Disbondement Testing per ASTM G8
- Salt Spray Testing per ASTM B117
- Impact Resistance Testing per ASTM G14

## FEATURES AND BENEFITS

- Reduce on-site labor cost. Meter setting installs in minutes.
- Fewer threaded joints reduces risk of gas leaks, increasing safety of meter setting.
- State-of-the-art coating capabilities coupled with the industry leading corrosion protection.
- Sizes ranges from 10 LT thru 45 LT.
- Can be coupled with support brackets or support stakes.

## TECHNICAL SPECIFICATIONS

- Steel Piping / ASTM A53 or API 5L
- Threads / NPT ANSI B1.20.1
- Flange / Swivel Spec ANSI B109.1
- Welds / API 1104

## LOOPS, BENDS, SPOOLS AND MANIFOLDS

Georg Fischer Central Plastics offers the same quality and attention to manufacturing detail for our meter loops, bends, and manifolds as we do for our completely assembled meter sets. GF Central offers a complete line of meter bends allowing the flexibility of replacement. Sizes range from 1/2" - 2" in threaded 90°, flanged 90°, 90° double loop, and 180° loops. Manifolds can be customized to your company's specifications in both the number of drops and inlet size.



**SPOOL**



**MANIFOLD**



**90° BENDS**



**90° BENDS**



**DOUBLE 90° LOOP**



**180° LOOP**



**MANIFOLD**

## METER SET ACCESSORIES



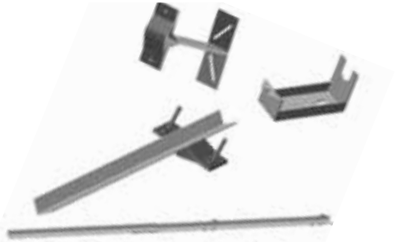
### TEST FITTINGS

Test Fitting is a compact machine welded gauge bar which provides an easy method for simultaneously checking the line integrity and meter set/meter spud alignment. Our gauges are made of two threaded connectors with common centerlines used in today's industry.



### METER ADAPTERS

Adapters easily accommodate the most common variations of meter connections used in the gas industry.



### METER SET SUPPORTS AND BRACKETS

Georg Fischer Central Plastics offers rigid and adjustable wall brackets that are powder coated for exterior installations. Meter brackets may be bolted to the house or mounted to a support post.



### METER BARRICADES





**GEORG FISCHER**  
PIPING SYSTEMS

## **GEORG FISCHER CENTRAL PLASTICS**

Georg Fischer Central Plastics builds quality piping systems that are efficient, reliable and safe - supplying products and solutions with unparalleled integrity.

### **PIPING SYSTEMS, PRODUCTS & SOLUTIONS WITH INTEGRITY**

#### **Oklahoma - Head Office**

39605 Independence  
Shawnee, OK 74804

#### **Texas**

4949 Joseph Hardin Drive  
Dallas, TX 75236

**1.800.654.3872**

[gfcpc.com](http://gfcpc.com)

**Gas | Water & Waste Water | Energy | Industrial**